

# E-compact instant water heater CEX9-U



## Application areas

Single point supply:

- > Kitchen sink
- > Washbasin
- > Double washbasin



# E-compact instant water heater

## CEX9-U

### Product information



**Energy efficiency class** **A** (Scale: A+ to F) **CEX9-U** (Multiple Power System: 6.6 or 8.8 kW adjustable)

Part number:	2400-26449	
Type:	closed-outlet	
Maximum operating pressure [MPa (bar)]:	1 (10) *)	
Water connections (thread connections):	G ½"	
User set temperature [°C]:	20 to 55	
Hot water output at $\Delta t = 33\text{ K}^{1) 2)}$ [l/min]:	2.9	3.8
Switch-on flow rate / max. flow rate <sup>3)</sup> [l/min]:	2 / 5	
Nominal power rating <sup>4)</sup> [kW]:	6.6	8.8
Nominal voltage [1~ / N / PE 220 – 240 V AC]:	fixed connection	
Nominal current <sup>2)</sup> [A]:	29	38
Required cable diameter <sup>2)</sup> [mm <sup>2</sup> ]:	4 – 6	6
Bare wire heating system IES®:	✓	
Ready for Smart Control:	✓  (optional)	
Ready for FX wireless remote control:	✓  (optional)	
Solar-compatible, suitable for reheating (inlet temperature ≤ 60 °C):	✓	
VDE approved / Protection class:	✓ / IP 24	
Specific water resistance at 15 °C [Ωcm] ≥ :	1100	
Nominal volume [litres]:	0.3	
Weight filled with water [kg]:	approx. 2.7	
Dimensions (height × width × depth) [cm]:	29.4 × 17.7 × 10.8	

\*) Also approved for pressureless operation 1) Temperature increase e.g. from 12 °C to 45 °C 2) Depending on the selected power rating 3) Limited flow amount for optimal temperature increase 4) Related to nominal voltage 230 V

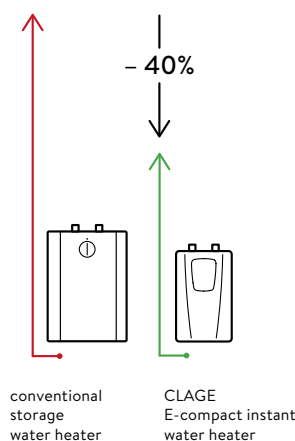
#### Description

- > Electronically controlled instant water heater (undersink model) with compact design
- > The heating output is electronically controlled. This provides an ideal hot water temperature without the need to add cold water at the tap.
- > Sensor-key operation with LED indicator for precise temperature setting between 20 °C and 55 °C
- > Two programming keys for individual pre-set temperatures, activatable temperature limit and operating displays
- > Easy installation under the kitchen sink facilitated by small dimensions and external ½-inch water connectors
- > Precise temperatures due to TWIN TEMPERATURE control TTC® up to the capacity of the appliance
- > The efficient bare wire heating system IES® reduces lime scale deposits and provides an extended service life
- > With the Multiple Power System MPS®, the maximum power rating is set at the time of installation: 6.6 or 8.8 kW
- > Can also be controlled via tablet or smartphone (iOS 9 or higher / Android-OS 4.4 or higher, FXE3 adapter and the »Smart Control« app required)
- > Solar-compatible (inlet temperature ≤ 60 °C)

#### Profitability comparison (Source: www.clage.com)

**Saves up to 40 % energy compared to conventional storage heaters.**

The E-compact instant water heater features an economical operation. The water is heated directly as it flows through the unit. Hot water is not stored in a tank, which saves standby energy that would be otherwise required.



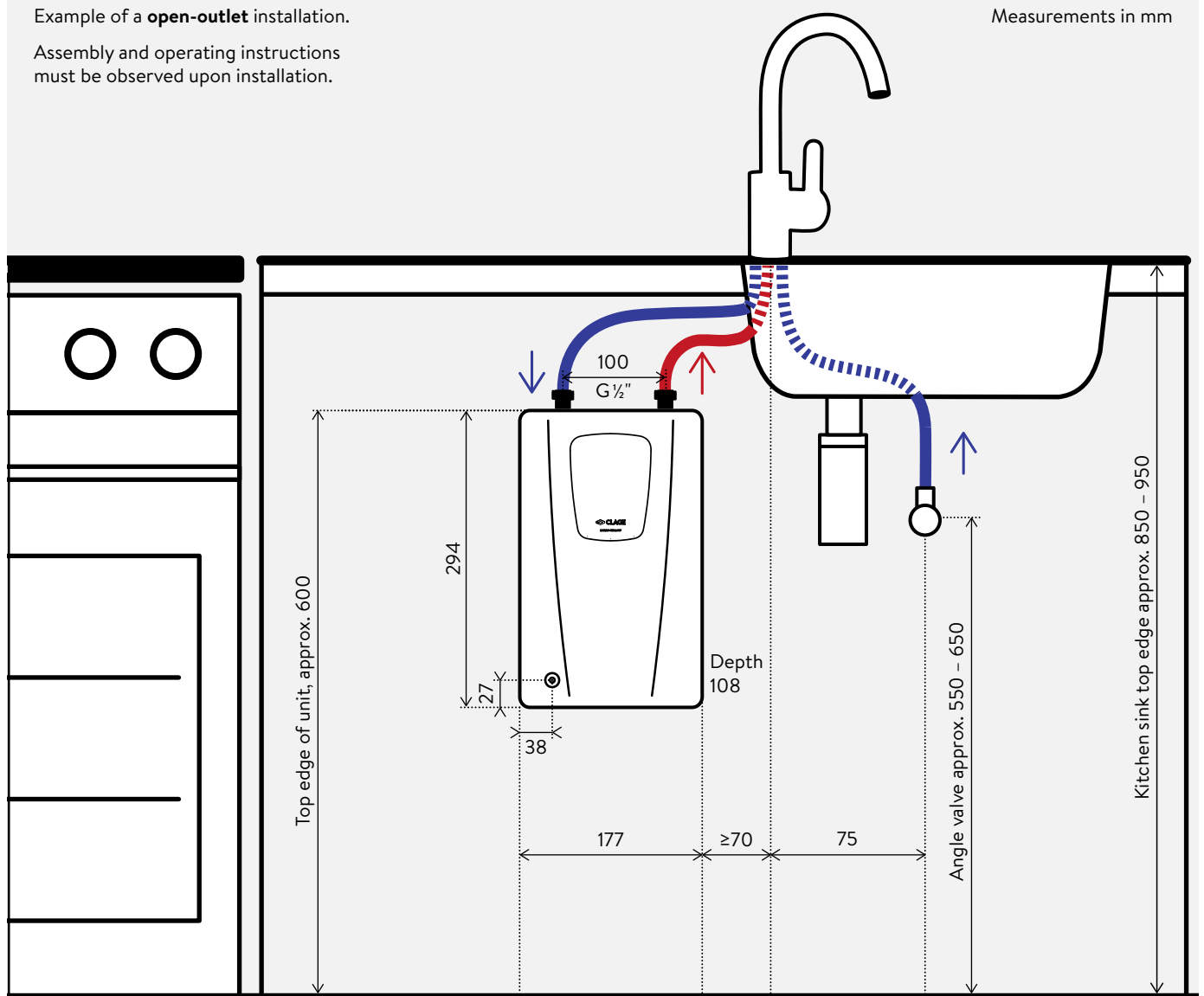
# E-compact instant water heater CEX9-U Installation



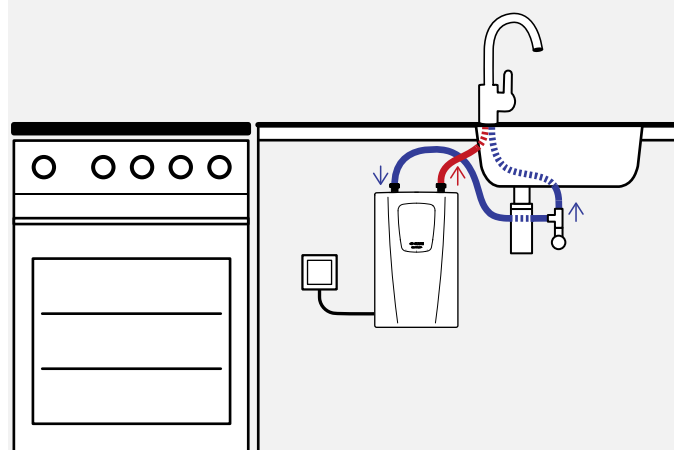
Example of a **open-outlet** installation.

Assembly and operating instructions must be observed upon installation.

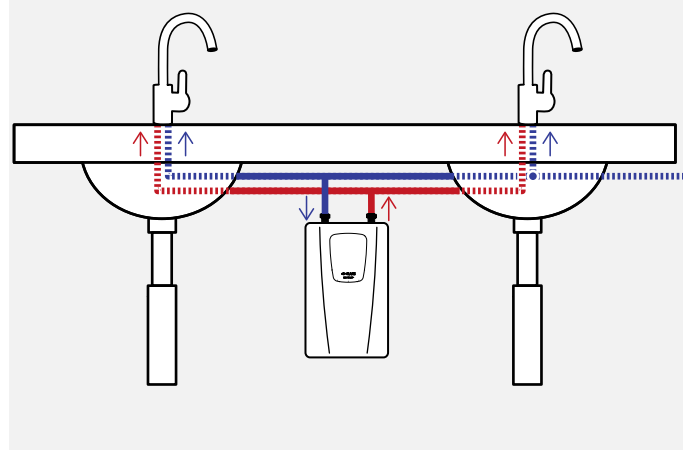
Measurements in mm



Alternative: **closed-outlet** installation



Alternative: installation with **closed-outlet tap and double washbasin**



# E-compact instant water heater CEX9-U Accessories



## Accessory for undersink installation (optional)

### Reducing adapter

$\frac{3}{8}$ -inch (a)  $\times$   $\frac{1}{2}$ -inch (i) flat sealing  
Part no. 89675

### FVS (necessary: reducing adapter)

Flexible connecting hose  $\frac{3}{8}$ -inch cap nut  $\times$   $\frac{3}{8}$ -inch cap nut, 50 cm long  
Part no. 89620

### T-piece (necessary: reducing adapter)

Special T-connector  $\frac{3}{8}$ -inch cap nut  $\times$   $\frac{3}{8}$ -inch squeeze-type 10 mm  
Part no. 89610



## FXS3 (C) remote control set (optional)

FX3 remote control including Bluetooth® remote control adapter FXE3 (C) for integration into the instantaneous water heater as a set. In addition to the operation at the device, the remote control allows the comfortable temperature adjustment of the instantaneous water heater over a distance of approx. 10 metres in the building. Secure Bluetooth® radio transmission, stepless temperature selection via two buttons, two fixed value buttons and an LCD display, magnetic wall bracket and batteries (included in delivery). IP 20. Dimensions (H  $\times$  B  $\times$  T): 5.8  $\times$  12.5  $\times$  1.9 cm

**FXS3 (C):** Part no. 3200-34027



## FXE3 (C) remote control adapter (optional)

Bluetooth® remote control adapter for integration into the instantaneous water heater to connect the water heater to a smartphone / tablet or the FX3 remote control. This adapter is required if the appliances are not yet equipped with an FX3 remote control.

**FXE3 (C):** Part no. 3200-34026



Apple



Android



## Recommended accessories for kitchen application (optional)

### EAK (vented)

Single-lever mixer tap with side lever and swivel spout 20 cm

**EAK:** Part no. 1100-04430



**Recommended accessories for bath application** (optional)

**EWT / EWT-C**

Single-lever mixer tap, nickel and lead free waterways,  
Easy-Fix fastening system and drawbar drain fitting,  
spout 11.2 cm, height x width: 15,1 x 17,5 cm

**EWT** (open-outlet): Part no. 1100-04420

**EWT-C** (closed-outlet): Part no. 1100-04421



**Aerator CSP 6, CSP 6a and CSP 6i** (optional)

The aerator at the tap supports the energy- and water-saving operation of the compact instant water heater. The new special CSP aerators mix air into the water and thus create a uniform water stream that does not splatter but softly cascades down.

- > Aerator insert for tap adapter M 22/24 at the tap  
**CSP 6 (< 3.5l / min):** Part no. 0010-00461
- > Aerator with chrome tap adapter M 24a  
(suitable for taps with internal thread at outlet)  
**CSP 6a:** Part no. 0010-0047
- > Aerator with chrome tap adapter M 22i  
(suitable for taps with external thread at outlet)  
**CSP 6i:** Part no. 0010-0046