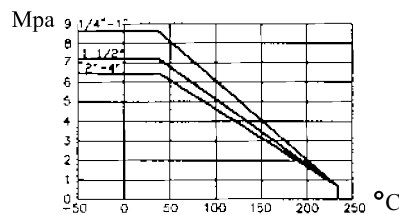
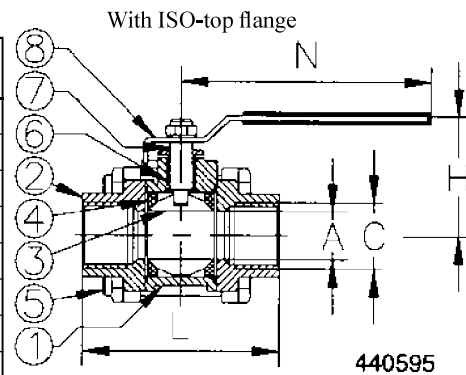


<b>BALL VALVE</b>	<b>440565</b>
<b>FULL BORE – BUTT WELD END</b>	<b>PN 64</b>

No	Part	Material
1	Body	Cast steel GSC25
2		
3	Ball	Stainless steel SS304
4	Seatring	PTFE 15% glasfibre
5	Bolt	Stainless steel SS304
6	Stem packing	PTFE
7	Stem	Stainless steel SS316
8	Lever	Stainless steel SS304
9	Butt weld end	Cast steel GSC25
10		


**Variants:**

Various actuators  
Seatring Carbon filled PTFE

Other dimensions/materials on request

DN	A	C	N	L	H	Max working-pressure		Weight Kg
						acc. to above chart		
8	11,5	17,5	117	64,5	57			0,4
10	12,7	17,5	117	64,5	57			0,5
15	15	22	117	66	57			0,6
20	20	27	137	83	69			0,9
25	25	34	157	95	80			1,2
32	32	42,5	157	111	85			2,1
40	38	48,5	185	131	95			2,8
50	50	61	200	151	110			4,4
65	65	73	285	186	135			8,4
80	80	92	285	212	148			13,3
100	100	115	315	235	170			19,5