

Steel ball valves, full bore

150 series, welding / welding, EN (DIN), DN 50-400, full bore

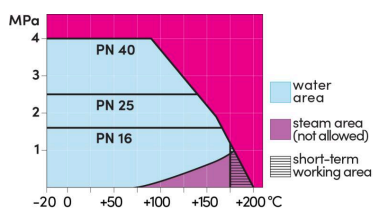
Body	DN 50-400 Steel, P235GH (1.0345)
Ball	DN 50-400 Stainless steel, X5CrNi18-10 (1.4301)
Ball seal	DN 50-400 PTFE+C
Stem	DN 50-400 Stainless steel, X8CrNiS18-9 (1.4305)
Stem seal	DN 50-400 FPM
Operation	DN 50-200 With zinc-plated steel handle DN 250-400 Valves are available with manual gear or with an electric or hydraulic actuator



Operation conditions

-20 °C – +200 °C
Below -20 °C contact manufacturer
Lowest allowed ambient temperature -40 °C

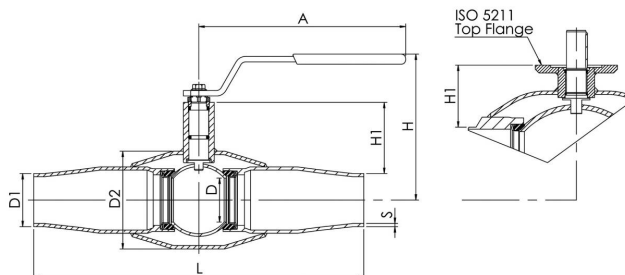
Leakage rate A (EN 12266-1)



Not for steam

DN 50-125

DN 150-400



DN	PN	Product no.	A	D	D1	D2	H	H1	L	S	kg
50	25	150050	278	50	60.3	101.6	158	70	300	2,9	4.5
65	25	150065	278	65	76.1	121.0	171	74	300	3,2	6.7
80	25	150080	279	80	88.9	139.7	218	114	325	3,6	10.5
100	25	150100	400	100	114.3	177.8	253	113	325	3,6	15.5
125	25	150125	600	125	139.7	219.1	272	121	360	3,6	25.0
150	25	150150	870	150	168.3	273.0	281	117	400	4,5	51.0
200	25	150200	1200	200	219.1	355.6	343	135	530	5	95.0
250	25	150250		250	273.0	457.0		158	550	5	126.0
300	25	150300		290	323.9	508.0		206	686	5,6	177.0
350	25	150350		340	355.6	610.0		267	762	6,3	258.0
400	25	150400		390	406.0	660.0		309	1100	7,1	519.0